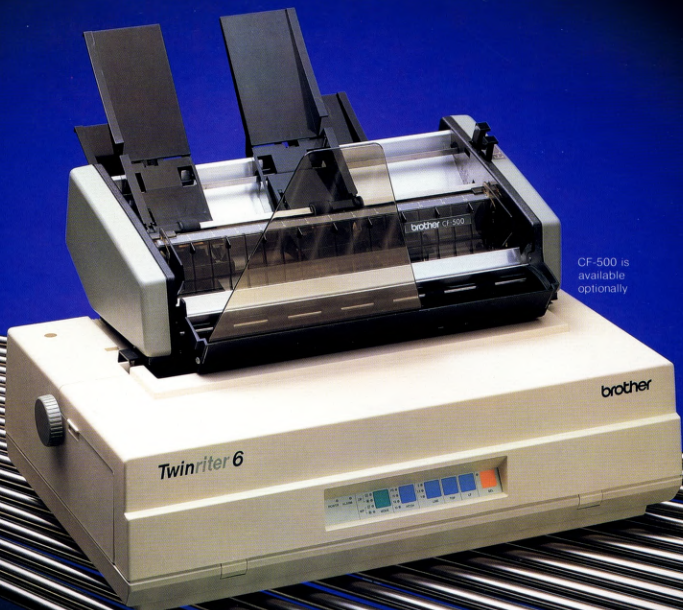


brother
We put your reputation on paper.

**The Integrated Printer for
Data Processing,
Word Processing and Graphics**



CF-500 is
available
optionally

Twinriter 6

The Dot Matrix/Daisy Wheel Printer

The Dot Matrix/Daisy Wheel Printer Twinriter 6

brother



The Microcomputer User:

The Twinriter 6 fills the complete needs of the microcomputer user. Its dot matrix printhead creates crisp graphics and prints draft text at 200 characters-per-second. Its daisy wheel printhead creates "typeset quality" text at 36 characters-per-second.

Data Processing:

For traditional data processing applications, the Twinriter 6 with its optional Forms Tractor (TF-300), will turn out invoices, statements and reports up to 136 columns wide.



Twinriter 6 with optional TF-300 Forms Tractor

Word Processing:

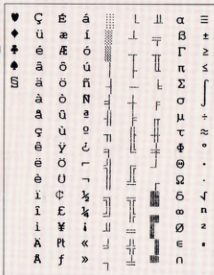
For word processing, the Twinriter 6 with its optional Sheet Feeder (CF-300) or Sheet/Envelope Feeder (CF-500) produces clean, crisp letter quality text in a wide variety of typesyles.



Twinriter 6 with optional CF-300 Sheet Feeder

Extended Character Set:

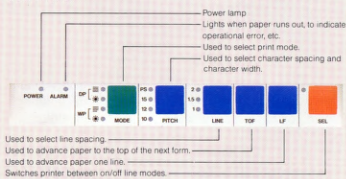
The Twinriter 6 can produce all 132 characters in the IBM extended character set. By combining the characters on the daisy wheel, and triple pass letter quality printing by the dot matrix printhead, it easily creates:



Ease of Use:

The Twinriter 6 offers the user complete and easy control of character pitch and line spacing and the TF-300 Forms Tractor, CF-300 Sheet Feeder and CF-500 Sheet/Envelope Feeder.

Control Panel

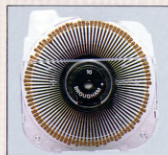


Letter Quality Text and Graphics:

To produce both letter quality text and high resolution graphics on the same page, the Twinriter 6 is the ideal printer!

Value:

The Twinriter 6 uses the easy-to-change, long-life Brother cassette daisy wheel and offers two ribbons, a long-life nylon ribbon and a high quality multistrike carbon ribbon, with which the Twinriter 6 produces clean, crisp graphics, far superior to those created with a conventional fabric ribbon.



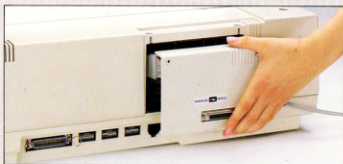
Daisy Wheel



Print Head

Compatibility:

The Twinriter 6 is compatible with virtually every microcomputer and every software package on the market today, even the new integrated, text/graphics software packages such as Lotus™ 1-2-3, Framework™ and enable™. The Twinriter 6 has a Centronics Parallel interface and optional RS-232C Serial interface.



Back of printer showing parallel and serial interfaces

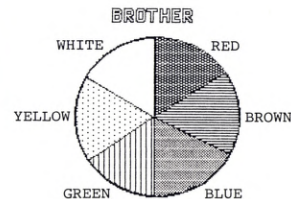
Operating Modes:

Selectable from the Control Panel or via software commands, the Twinriter 6 has four Operating Modes:

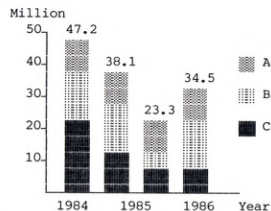
- DP/Dot Matrix: High speed data processing and graphics
 - DP/Daisy Wheel: Mixing letter quality text and graphics
 - WP/Dot Matrix: Draft printing of word processing documents
 - WP/Daisy Wheel: Letter quality word processing
- In the DP Modes, the Twinriter 6 is Epson™ or IBM™ compatible, in the WP Modes, Brother HR or Diablo™ compatible.

HIGH SPEED DRAFT PRINTING

When you need real draft quality speed the TWINRITER-6 can provide it with the dot matrix mode at 200 characters per second.



----- Graphics using Daisy & Dot -----



- Lotus™ 1-2-3 is a trademark of Lotus Development Corp.
- Framework™ is a trademark of Ashton-Tate.
- enable™ is a trademark of The Software Group, Inc.
- IBM is a trademark of International Business Machines Corporation.
- Diablo is a trademark of Xerox Corporation.
- Epson is a trademark of Seiko Epson Corporation.

Specifications and Control Codes

Command	WP Mode	DP Mode
	Function	
NUL		NUL
BEL		Buzzer
BS		Backspace
HT		Horizontal Tab
LF		Line Feed
VT		Vertical Tab
FF		Form Feed
CR		Carriage Return
SO	---	Double Width Enlarge Mode
SI	---	Condensed Mode Set
DC1	---	Printer Select
DC2	---	Condensed Mode Reset
DC3	---	Printer Deselect
DC4	---	Double Width Enlarged Mode Reset
CAN	---	Cancel 1 Line Data
ESC	---	Escape
DEL	Same as CAN	Clear Last Data
ESC BS	1/120 Back Space	---
ESC HT	(+) Absolute HT Movement	---
ESC LF	Reverse LF	---
ESC VT	(+) Absolute VT Movement	---
ESC FF	(+) Page Length Set	---
ESC CR	(+) Printer Reset	(+) Change to WP-LQ/HS
ESC SO	---	Same as SO
ESC SI	---	Same as SI
ESC EM	(+R) Paper Eject (Cut sheet feeder)	---
ESC RS	(+) VMI Set	---
ESC US	(+) HMI Set	---
ESC *	Auto LF Set	---
ESC #	Auto LF Reset	---
ESC &	Bold/Shadow/Double Print Clear	---
ESC *	(+m+n1+n2) Bit Image Mode Select	---
ESC -	VT Set	(+) Underline Mode
ESC /	Auto Backward Set	---
ESC 0	Right Margin Set	1/8" Line Pitch Set
ESC 1	HT Set	7/72" Line Pitch Set
ESC 2	All HT/VT Clear	1/6" Line Pitch Set
ESC 3	Graphic Mode Set	(+) n/216" Line Pitch Set
ESC 4	Graphic Mode Reset	---
ESC 5	Forward Print Set	---
ESC 6	Backward Print Set	---
BSC 8	HT Clear	PE disable
ESC 9	Left Margin Set	PE enable

General Specifications:

- Interface CENTRONICS parallel (optional RS-232C convertor)
- Print columns 136 (pica pitch)
- Print pitch 10, 12, 15, PS
- Paper width 16.5" max.
- Paper feed Bidirectional, friction feed
- Paper feed pitch 1/3", 1/4", 1/6" (switch controlled)
- Ribbon feed pitch 1/2" (software controlled)
- Ribbon Cassette type, Brother standard
- Multi-strike, fabric
- Copy capacity Original (45kg) + 4 copies (15kg)
- 3K byte buffer (option ... 11K or 19K byte)

Control panel

- Switches
- Indicators
- Power supply
- Reliability
- Environmental
 - Temperature
 - Humidity
- Noise
- Dimensions
- Weight

SELECT, LF, TOF, LINE, PITCH, MODE
POWER, ALARM, SELECT, LINE, PITCH, MODE

100,120,127,200,220,230 or 240V, 50/60Hz

MTBF 3000hrs, 25% duty (operating)

10°C - 40°C (50°F - 104°F)

20% - 80% (non-condensation)

Less than 60dB

590(W) x 200(H) x 381(D) mm

23.2" x 7.9" x 15.0"

17.0kg (37.5 lbs.)

Daisy Wheel Mode Specifications:

Print speed 36 cps (max.) 30 cps (pica pitch)

Print wheel 96 chrs./wheel

Print wheel life 10 million chrs./wheel

Dot Matrix Mode Specifications:

Print head 9-pin wire dot

Print speed 200 cps (max.)

Character configuration

Draft mode 7 x 9 dot matrix

Near letter quality mode 24 x 24 dot matrix

Command	WP Mode	DP Mode
	Function	
ESC <	---	Home Return
ESC @	Change to DP-LQ/HS	Printer Reset
ESC A	---	(+) n/72" Line Pitch Set
ESC B	---	VT Set
ESC C	Top/Bottom Margin Clear	(+) (+0+n) Page Length Set
ESC D	1/2 VMI Reverse LF	HT Set
ESC E	Underline Set	Emphasized Mode Set
ESC F	Double Strike Set	Emphasized Mode Reset
ESC G	---	Double Strike Print Set
ESC H	Strikeout Set	Double Strike Print Reset
ESC I	Strikeout Clear	---
ESC J	(+) n/216" Line Feed	---
ESC K	---	(+n1+n2) Normal Density Bit Image
ESC L	Bottom Margin Set	(+n1+n2) Dual Density Bit Image
ESC M	---	Elite Set
ESC N	---	(+) Skip Perforation Set
ESC O	Bold Print Set	Skip Perforation Reset
ESC P	PS Set	Pica Set
ESC Q	PS Clear	(+) Right Margin Set
ESC R	Underline Clear	(+) International CG Select
ESC S	Return to SW	(+) Super/Sub Set
ESC T	Top Margin Set	Super/Sub Clear
ESC U	1/2 VMI LF	(+) Print Direction Set
ESC W	Shadow Print Set	(+) Double Width Enlarged Character
ESC X	Print Modification Clear	---
ESC Y	Print 20H	(+n1+n2) Double-Speed Dual Density Bit Image
ESC Z	Print 7FH	(+n1+n2) Quadruple Density Bit Image
ESC /	Auto Backward Print Clear	---
ESC e	---	(+n+m) HT/VT Unit Set
ESC i	---	(+n+m) Multi LF, Multi Space
ESC j	(+) n/216" Reverse LF	---
ESC k	(+n1+n2) Normal Density Bit Image	---
ESC l	(+n1+n2) Dual Density Bit Image	(+) Left Margin Set
ESC p	---	(+) Pitch Select
ESC x	---	(+) Change of HS-LQ
ESC y	(+n1+n2) Double Speed Dual Density Bit Image	---
ESC z	(+n1+n2) Quadruple Density Bit Image	---