

brother

# The Hybrid



# *Twinriter 5*

The World's First Daisy Wheel/Dot Matrix Printer

# TWINRITER 5

## Meeting The Modern Needs of Integrated Software



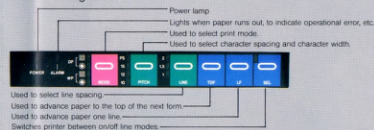
Brother Industries scores again with the introduction of the TWINRITER 5 daisy wheel/dot matrix printer. The TWINRITER 5 is the first printer in the world to combine both daisy wheel and dot matrix printing systems into a single unit. Now you can have 36cps letter quality printouts for word processing requirements and 140cps dot matrix speed for data processing or first drafts, without having to buy two separate printers. And that's not all. The TWINRITER 5 is designed to be compatible with the new requirements of most integrated software systems. This means that it fits right into a comprehensive office system without special programming.

Switching between the two printing systems can be accomplished using ESC control codes from the host machine for unlimited ability to produce graphics or special characters not included on the daisy wheel being used. Even the print quality of the dot matrix characters are just a shade this side of letter quality.

A choice of six types of dot densities provides graphics that are sharp and clear. Illustrations, graphs and charts can be easily inserted in the text without having to draw them in after printing of the main text. And, of course, the TWINRITER 5 also features all of the fine functions that have made Brother printers the choice the world over. Bold printing, superscript, subscript, auto underline, proportional spacing, clear buffer and an easy-to-use front panel to control all major functions. With the TWINRITER 5, about the only thing double does NOT apply to is price. Outstanding cost performance adds up to savings throughout the entire life of the unit. Economical, compact and versatile. The Brother TWINRITER 5 daisy wheel/dot matrix printer.

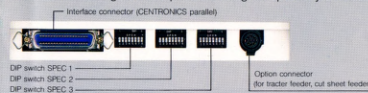
### Control Panel

Controls and indicators of the TWINRITER 5 are conveniently located for centralized switching operations. The current status of the printer can be determined at a glance.



### Interface Layout

The TWINRITER 5 comes equipped with a CENTRONICS parallel interface. An RS-232C interfacing is made possible using an optionally available converter.



### Cost Performance Plus

The dot matrix/daisy wheel capabilities of the TWINRITER 5 allow wide versatility that saves space, time and money.

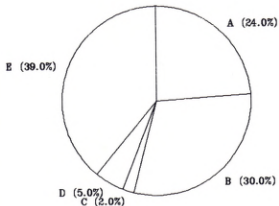
1. Document produced on a word processor.
2. Printout in draft mode (dot).
3. Proofreading and review.
4. Corrections made on word processor.
5. Switch to letter quality mode (using control panel or computer command).
6. Printout in letter quality mode (daisy wheel).
7. Finished document.

### Features:

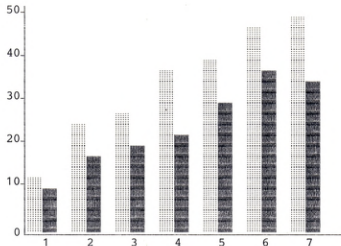
- Daisy wheel printing
- Dot matrix printing
- 3K byte buffer (option . . . 11K or 19K byte)
- Six types of dot densities
- Super/subscript
- Auto underlining
- Bold printing
- Shadow printing
- Proportional spacing

# If You Can Imagine It, TWINRITER 5 Can Print It!

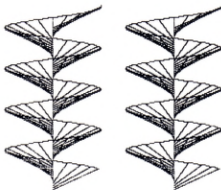
Now you can have your daisy wheel and dot matrix too, with the Brother **TWINRITER 5** printer. Graphs, charts and tables can be included within a letter quality document without complex changes or operations.



A choice of dot densities lets you choose the best setting for the job at hand: blocks, circles or special characters. Computer control of the printing functions means that even complex jobs are completed quickly and easily.



Hardcopies of virtually any graphics you can imagine are printed out and incorporated into your documentation. This feature provides the ability to make documents more **eye-catching** and informative.

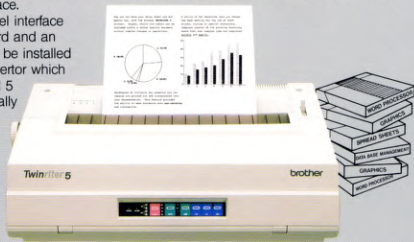


\*\*\*\*\* Graphic Pattern \*\*\*\*\*

# Twice the Versatility for a Fraction of the Cost

One of the most important concerns for businesses the world over is the practical application of available resources. The modern manager must constantly be on the lookout for ways to save. The Brother TWINRITER 5 now makes it possible to economize to an extent that is almost too good to be true. High speed dot matrix capabilities mean less time to produce documents. Designing two printing systems into a single unit cuts costs and required space.

A CENTRONICS parallel interface is equipped as standard and an RS-232C interface can be installed using an optional converter which means the TWINRITER 5 can be used with virtually any computer on the market. Why force yourself to decide what kind of printer to buy when you can have both? With the TWINRITER 5, by Brother.



## Print Head

The secret behind the TWINRITER 5 is a dual head printing system that provides both daisy wheel and dot matrix capabilities. Switching between the two heads allows virtually unlimited versatility.



## Optional Accessories

### TF-300 Tractor Feeder

Slip this option into place and you're ready for non-stop high speed printing. Fanfold paper is continuously led into the printer smoothly and reliably. Bidirectional feed ensures wide ranging versatility. Adjustable to a variety of paper widths, the TF-300 lets you use the high speed printing capabilities of the TWINRITER 5 to their full potential.



### CF-300 Cut Sheet Feeder

Word processing often calls for printouts on letterhead or special grades of typing paper. With the CF-300 cut sheet feeder all you need to do is load a stack of that paper and sit back. The unit automatically feeds paper into the printer one sheet at a time until done. The moveable roller guide permits the typing of envelopes or other individual projects without removing the feeder unit.



### IF-232

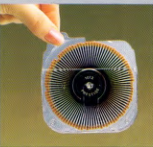
The standard CENTRONICS parallel interface of the TWINRITER 5 can easily be adapted to RS-232 serial operation with the separately available IF-232 converter.

### Cassette Ribbon

Even the cassette ribbon of the TWINRITER 5 has been specially designed for performance. Extended ribbon life adds up to economical, high-quality output.

### Daisy Wheel

As with all of Brother's quality printers, daisy wheels are available in a wide variety of typesets. Each wheel is enclosed in its own plastic case for quick, easy changes.



## General Specifications:

- Interface CENTRONICS parallel (optional RS-232C converter)
- Print columns 136 (pica pitch)
- Print pitch 10, 12, 15, PS
- Paper width 16.5" max.
- Paper feed Bidirectional, friction feed
- Paper feed pitch 1/3", 1/4", 1/6" (switch controlled) 1/216" min (software controlled)
- Ribbon Cassette type, Brother standard Multi-strike, fabric
- Copy capacity Original (45kg) + 4 copies (15kg)

- Control panel Switches Indicators

- Power supply Reliability
- Environmental Temperature Humidity
- Dimensions
- Weight

SELECT, LF, TOF, LINE, PITCH, MODE  
POWER, ALARM, SELECT, LINE, PITCH, MODE  
100, 115, 120, 220 or 240V, 50/60Hz  
MTBF 3000hrs, 25% duty (operating)  
10°C - 40°C (50°F - 104°F)  
20% - 80% (non-condensation)  
Lines less than 60dB  
590(W) x 200(H) x 381(D) mm  
23.2" x 7.9" x 15.0"  
16.0kg (35.3lbs.)

## Daisy Wheel Mode Specifications:

Print speed 36 cps (max.) 30cps (pica pitch)  
Print wheel 96 chrs/wheel  
Print wheel life 10 million chrs/wheel

## Dot Matrix Mode Specifications:

Print head 9-pin wire plot  
Print speed 140 cps (max.)  
Character configuration  
Draft mode 7 x 9 dot matrix  
Near letter quality mode 24 x 24 dot matrix

# WP-DP Control Code Comparison

Command	WP Mode	DP Mode
NUL		NUL
BEL		Buzzer
BS		Backspace
HT		Horizontal Tab
LF		Line Feed
VT		Vertical Tab
FF		Form Feed
CR		Carriage Return
SO	---	Double Width Enlarge Mode
SI	---	Condensed Mode Set
DC1		Printer Select
DC2	---	Condensed Mode Reset
DC3		Printer Deselect
DC4	---	Double Width Enlarged Mode Reset
CAN		Cancel 1 Line Data
ESC		Escape
DEL	Same as CAN	Clear Last Data
ESC BS	1/120 Back Space	---
ESC HT	(+n) Absolute HT Movement	---
ESC LF	Reverse LF	---
ESC VT	(+n) Absolute VT Movement	---
ESC FF	(+n) Page Length Set	---
ESC CR	(+P) Printer Reset	(+P) Change to WP-LQ/HS
ESC SO	---	Same as SO
ESC SI	---	Same as SI
ESC EM		(+R) Paper Eject (Cut sheet feeder)
ESC RS	(+n) VMI Set	---
ESC US	(+n) HMI Set	---
ESC *	Auto LF Set	---
ESC #	Auto LF Reset	---
ESC &	Bold/Shadow/Double Print Clear	---
ESC *		(+m+n1+n2) Bit Image Mode Select
ESC -	VT Set	(+n) Underline Mode
ESC /	Auto Backward Set	---
ESC 0	Right Margin Set	1/8" Line Pitch Set
ESC 1	HT Set	7/72" Line Pitch Set
ESC 2	All HT/VT Clear	1/6" Line Pitch Set
ESC 3	Graphic Mode Set	(+n) n/216" Line Pitch Set
ESC 4	Graphic Mode Reset	---
ESC 5	Forward Print Set	---
ESC 6	Backward Print Set	---
BSC 8	HT Clear	PE disable
ESC 9	Left Margin Set	PE enable

Command	WP Mode	DP Mode
ESC <	---	Home Return
ESC @	Change to DP-LQ/HS	Printer Reset
ESC A	---	(+n) n/72" Line Pitch Set
ESC B	---	VT Set
ESC C	Top/Bottom Margin Clear	(+n) (+0+n) Page Length Set
ESC D	1/2 VMI Reverse LF	HT Set
ESC E	Underline Set	Emphasized Mode Set
ESC F	Double Strike Set	Emphasized Mode Reset
ESC G	---	Double Strike Print Set
ESC H	Strikeout Set	Double Strike Print Reset
ESC I	Strikeout Clear	---
ESC J		(+n) n/216" Line Feed
ESC K	---	(+n1+n2) Normal Density Bit Image
ESC L	Bottom Margin Set	(+n1+n2) Dual Density Bit Image
ESC M	---	Elite Set
ESC N	---	(+n) Skip perforation Set
ESC O	Bold Print Set	Skip Perforation Reset
ESC P	PS Set	Pica Set
ESC Q	PS Clear	(+n) Right Margin Set
ESC R	Underline Clear	(+n) International CG Select
ESC S	Return to SW	(+n) Super/Sub Set
ESC T	Top Margin Set	Super/Sub Clear
ESC U	1/2 VMI LF	(+n) Print Direction Set
ESC W	Shadow Print Set	(+n) Double Width Enlarged Character
ESC X	Print Modification Clear	---
ESC Y	Print 20H	(+n1+n2) Double-Speed Dual Density Bit Image
ESC Z	Print 7FH	(+n1+n2) Quadruple Density Bit Image
ESC \	Auto Backward Print Clear	---
ESC e	---	(+n+m) HT/VT Unit Set
ESC f	---	(+n+m) Multi LF, Multi Space
ESC j		(+n) n/216" Reverse LF
ESC k	(+n1+n2) Normal Density Bit Image	---
ESC l	(+n1+n2) Dual Density Bit Image	(+n) Left Margin Set
ESC p	---	(+n) Pitch Select
ESC x		(+n) Change of HS-LQ
ESC y	(+n1+n2) Double Speed Dual Density Bit Image	---
ESC z	(+n1+n2) Quadruple Density Bit Image	---

**brother**  
**Twinriter 5**